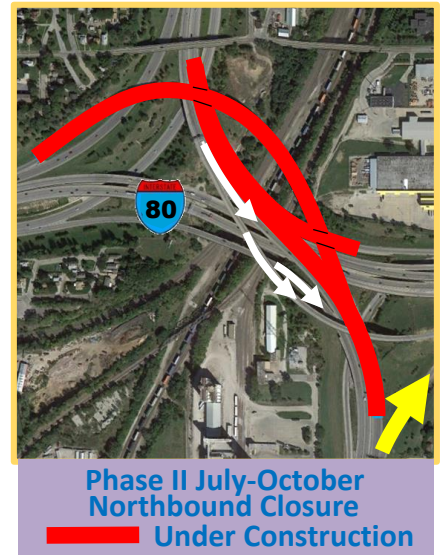
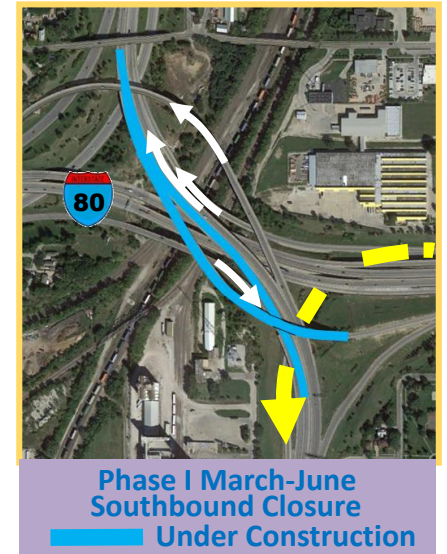
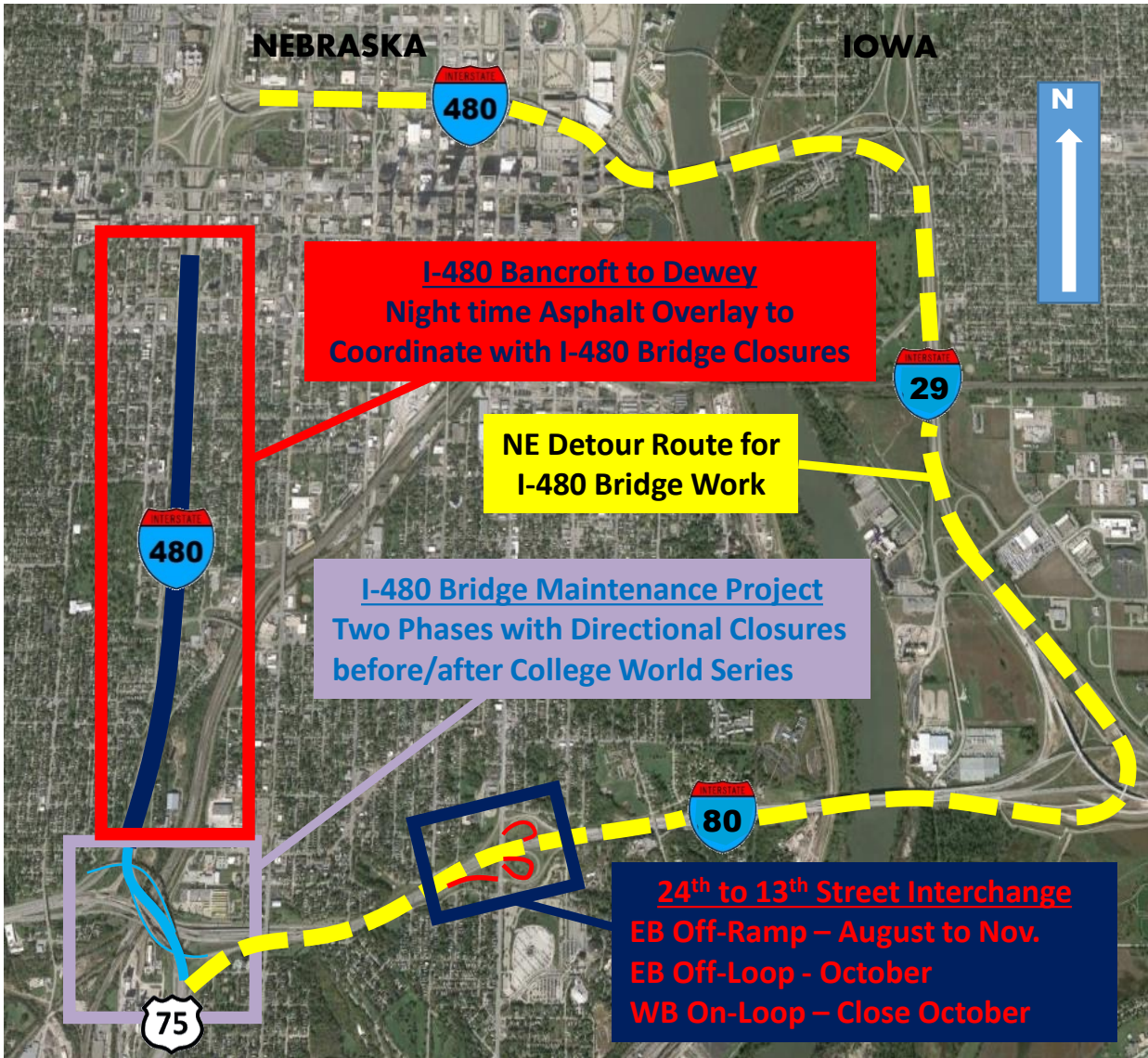


NDOR MAJOR CONSTRUCTION FOR 2017



**I-80/680 Interchange
'Q' – 'L' Collector-Distributor Roads**

WEST CENTER



WB CD Bridge



108TH

I STREET

L STREET



Q STREET

Project starts August 2017
1-Asphalt Overlay & Concrete Barrier
2-Westbound CD Bridge Maintenance
-Structure limited to single lane Sept - Nov
3-'Q' Street off-ramp could have a weekend closure to fix concrete

**US-6 Bridges
West Dodge Expressway
Epoxy Polymer Overlay**

**Begin Approximately July 13, 2017
PHASE 2 Westbound**

- 28 Nighttime Closures of Westbound direction between 8 pm to 6 am.
 - Traffic detoured to ground level Dodge
- 6 Weekend Westbound Closures
 - Single lane provided on Expressway

Begin April 27, 2017

PHASE 1 Eastbound

- 28 Nighttime Closures of Eastbound direction between 8 pm to 6 am.
 - Traffic detoured to ground level Dodge
- 6 Weekend Eastbound Closures
 - Single lane provided on Expressway

Open to traffic:

- HS Track at Burke (May 18-19)
- Memorial, 4th and Labor Day

